

20
22



THE HOME OF REBAR HANDLING MACHINES



MANUAL TYC-HD42A

Contact our after sales department for any questions or concerns

www.cnbmachinery.com cnbsales@cnbmachinery.com (02) 8824-6391 /6386



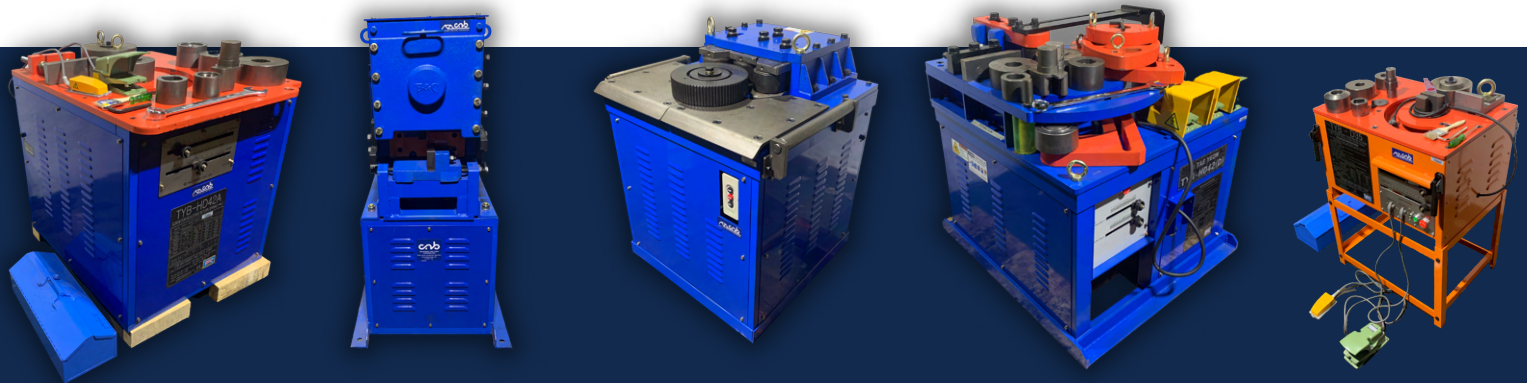


TABLE OF CONTENTS

Machine Specifications -----	03
Basic Guidelines to Follow -----	04
Proper Rebar Cutting Guidelines -----	08



TYC-HD42A

Heavy Duty Cutter

Machine Specification

Cutting Capacity	10-42mm rebars (0.375-1.65 in)
Motor	AC 3.7kW / 5HP
Power Requirements	3 phase, 220V-230V 60HZ (factory set up) 380V, 440V (customizable per request)
Weight	836kg / 1,839lb
Dimension	(L) 838mm (W) 688mm (H) 313mm

Number of rebars the machine can cut at once

Diameter of Rebar	29-42mm	22-25mm	19mm	16mm	13mm	10mm
No. of Rebars	1 rebar	2 rebars	3 rebar	5 rebars	6 rebars	9 rebars

Power Cable Requirements

Power Supply / Power	Standard Sizes / Length	Excess Length
----------------------	-------------------------	---------------

220-230VOLTS 3 PHASE 5HP 3.7 KW
(60hz) - (factory set up)
380V, 440V (customizable per request)

#10 AWG / 5.5mm wires, Max length
from Main Circuit Breaker 30 Amps is
30 meters

When the wire exceeds 30 meters,
replace the wires to a bigger size
depending on the length
requirements to avoid power
fluctuation or voltage drop.

Power Supply Guidelines



Make sure to check that the power supply of lines 1-3 is stable between 220-230V. The machine's power supply is directly from the main circuit breaker. Make sure that the wires have been properly tightened. We recommend that you would use a thicker power cable to avoid power fluctuation. The power supply can be modified either to 380V or 440V upon request.

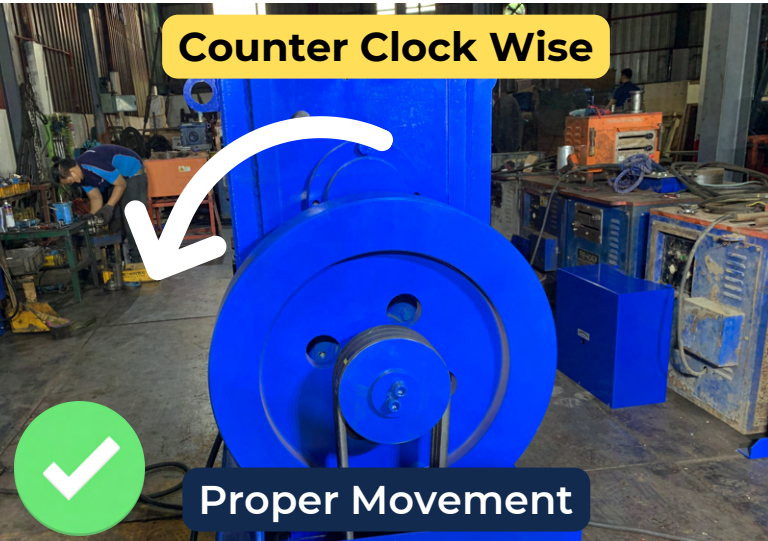
ON and OFF Switch



Activate the machine by pressing the ON button. Wait for at least 30 seconds before proceeding with cutting. Deactivate the machine by pressing the OFF button.

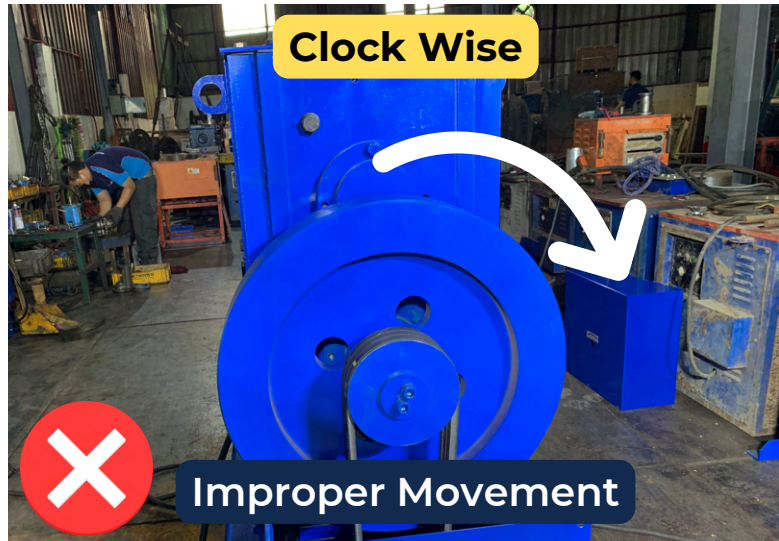
Proper Fly Wheel Movement for Cutting

Counter Clock Wise



Proper Movement

Clock Wise

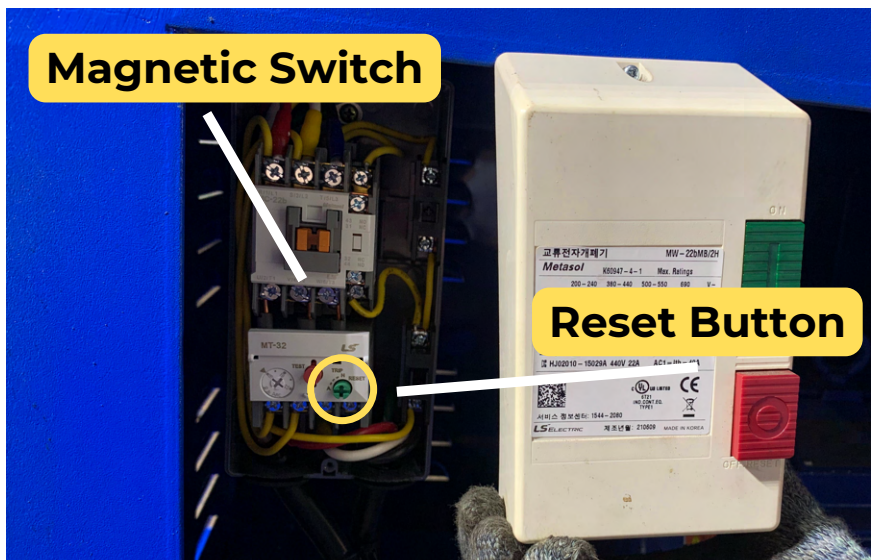


Improper Movement

As mentioned in the previous page, the machine operator should wait for at least 30 seconds for the engine and fly wheel to stabilize. The proper direction of the fly wheel is to move in a counter clock wise direction. If the fly wheel is moving clock wise, the machine will not be able to cut rebars.

Magnetic Switch for the safety system of the machine

Magnetic Switch



Reset Button

The machine is equipped with a magnetic switch for the safety of the machine and its operator. Once the machine senses that there is an uneven power supply, the magnetic switch will automatically shut the machine down to protect itself and the machine operator. In order to activate the machine again, press the reset button.

Oil Lubrication for maintenance and smooth cutting



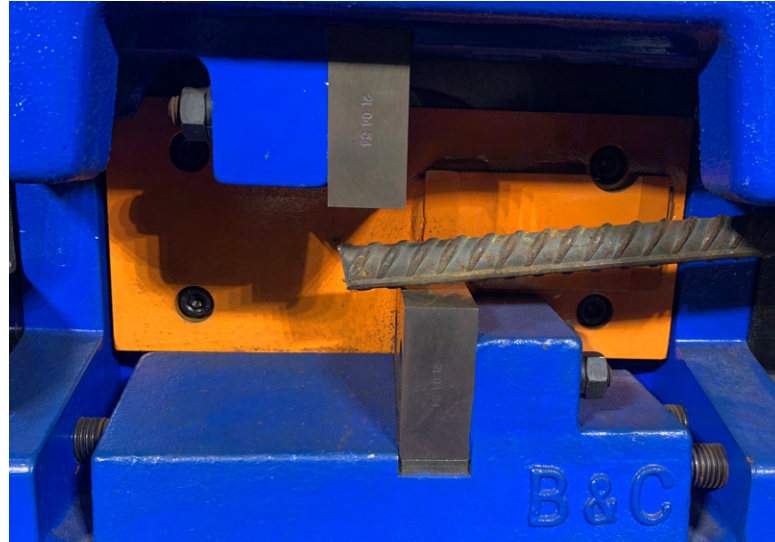
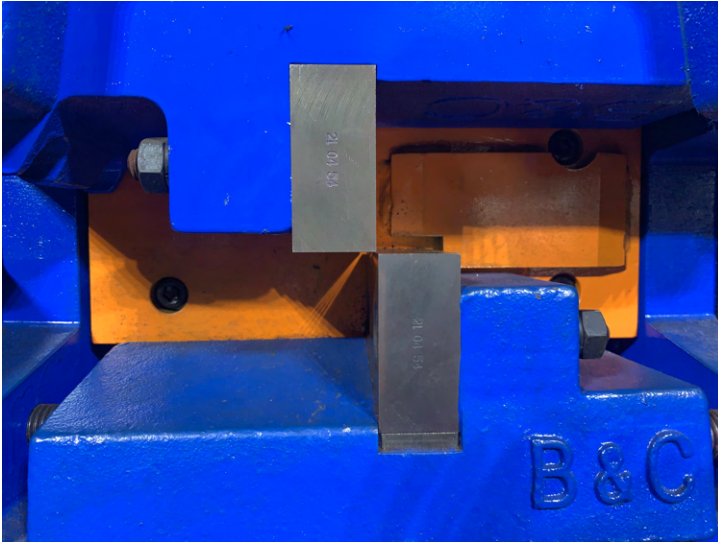
If the machine operator senses that the pulling knob is no longer smooth he can apply oil into the oil panel. Our machine comes with an oil gun and 8 ounces of oil. Apply half the amount of oil in the oil gun once a week into the oil panel to smoothen.

Tightening of Bolts for Proper Cutting Direction



There may be instances when the bolts can get loose because of the machine usage due to vibrations. Make sure to tighten the bolts from time to time as loose bolts will cause the machine to have improper cutter blade direction when cutting.

Distance between Cutter Blades



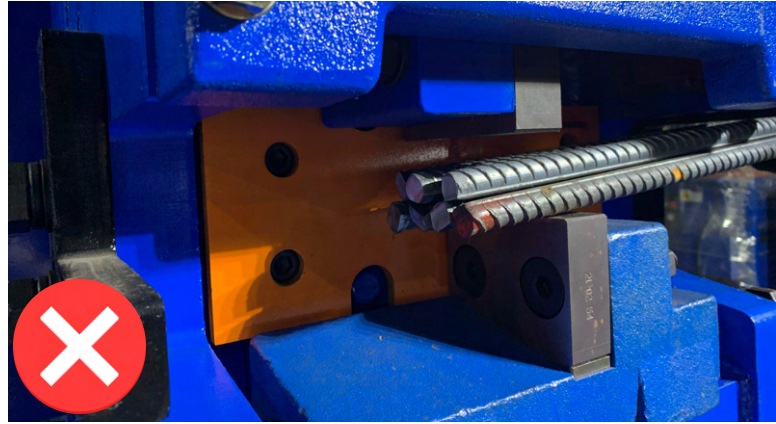
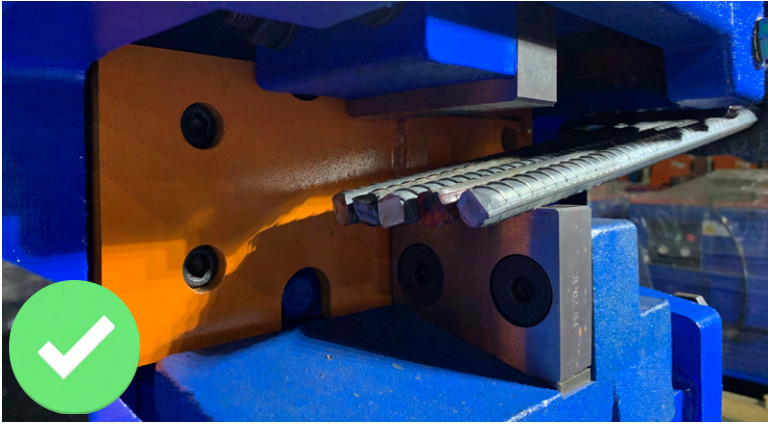
Make sure that the **distance between the bar cutter blades** are very close to each other. If there is **too much space** between the bar cutter blades, there is a high chance that the rebars will come in contact with the **other sides of the blade**. This will be a waste of the sides of the cutter blade when one side is enough to cut the rebars.

Maximizing the Cutter Blades (4 usable sides)

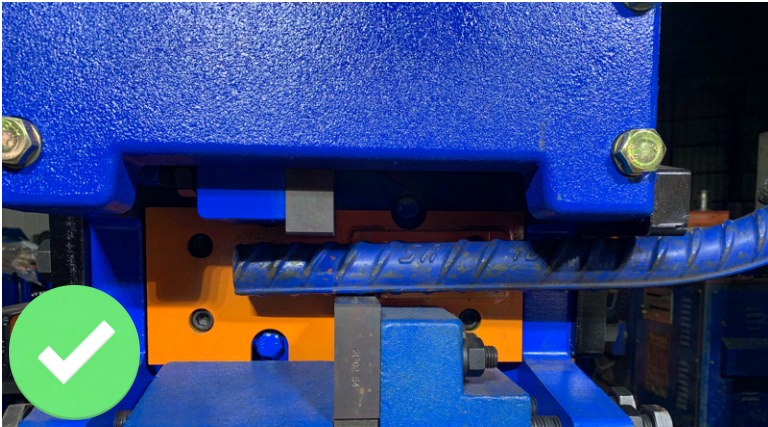


All **4 sides of our cutter blades** can be used for cutting. As mentioned above, make sure that when cutting, the rebars will come in contact only with **one side** of the blade so that you can use all 4 sides of the cutter blade to its **maximum capacity**.

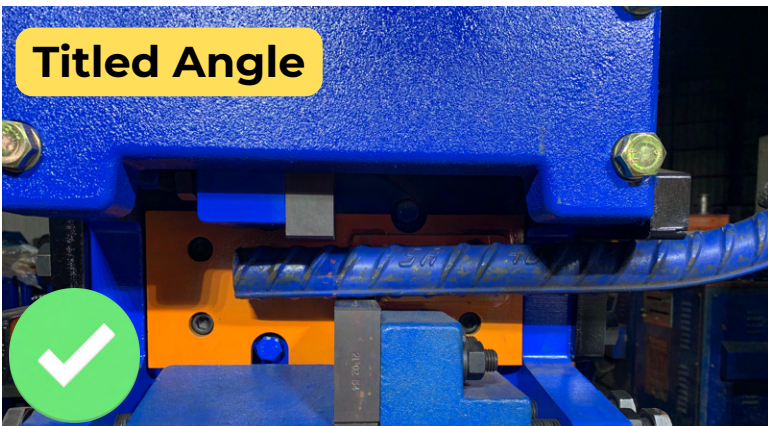
Proper Rebar Cutting Guidelines



Make sure to follow the proper number of rebars to cut at once. Refer to page 3 for the highest number of rebars you may choose to cut at once. Not following the instructions will lead to shorter lifespan of your bar cutter blades.

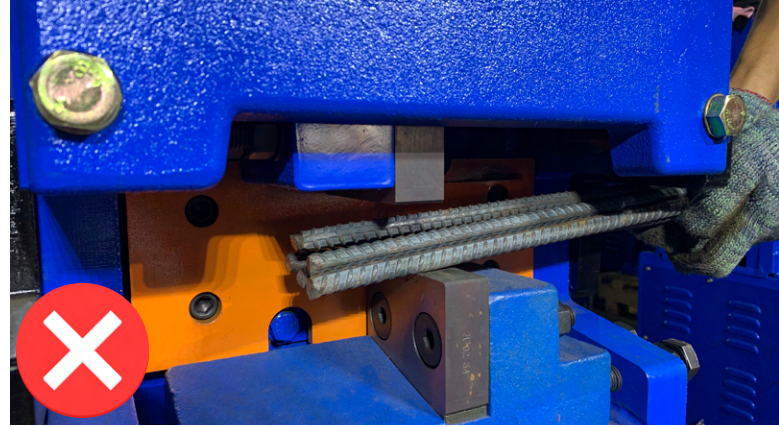
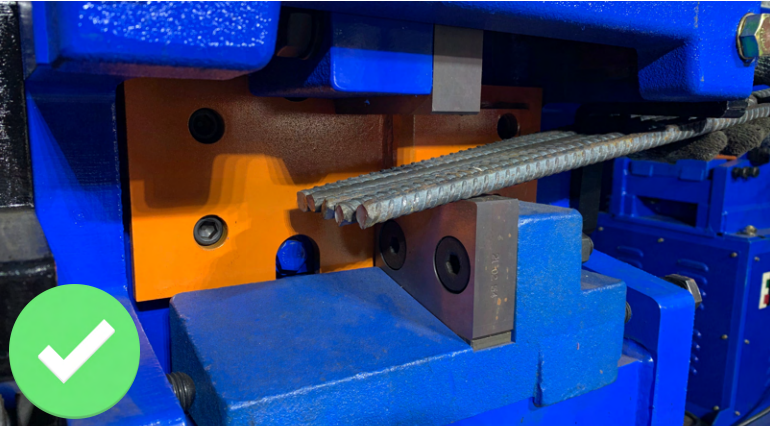


Make sure that the rebar's position is placed on the right side of the machine. This is because the bar stopper is placed on the right side of the machine for proper cutting.

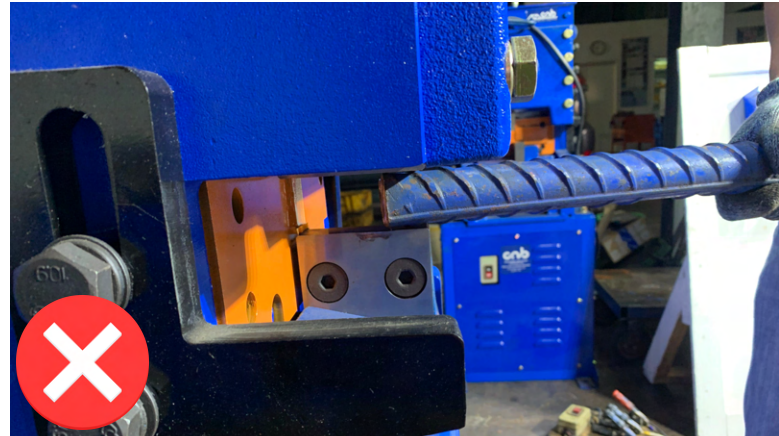
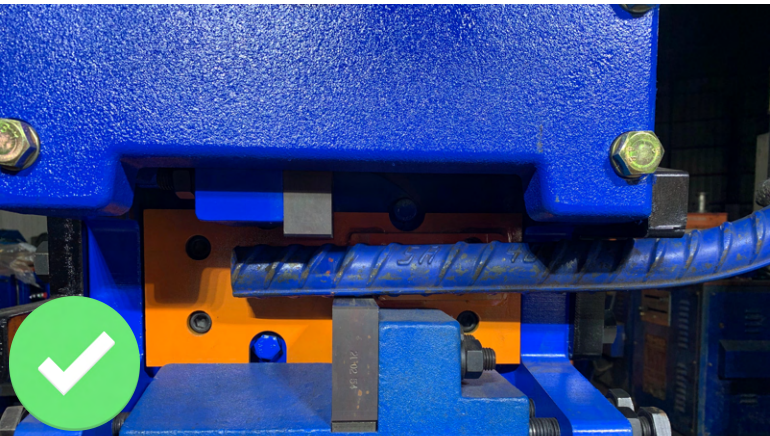


When placing the rebars on top of the rebar cutter blade, make sure that the rebar is held in a slightly tilted angle and not completely flat. Once the rebar is being cut the bar will move upwards due to the force being applied to it. If the bar is flatly placed, it will not be secured to the bar stopper causing violent movements that can affect the safety of the machine operator.

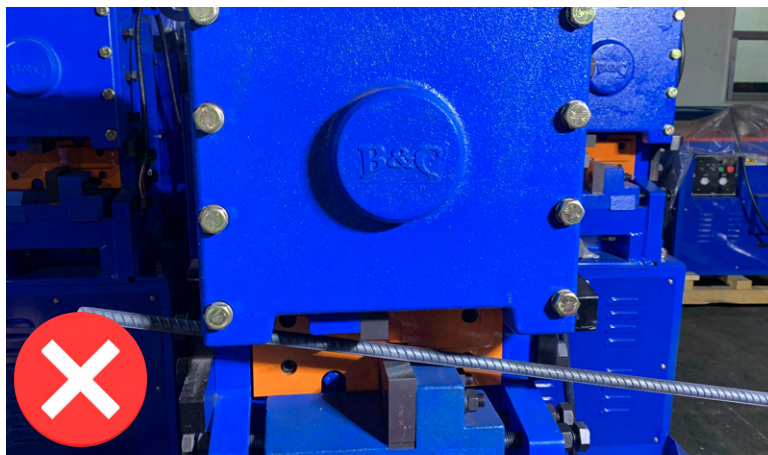
Proper Rebar Cutting Guidelines



Do not stack up the rebars when cutting. Make sure to check the total number of rebars allowed per rebar diameter, and the proper way of placing the rebars on the cutter blades before cutting.



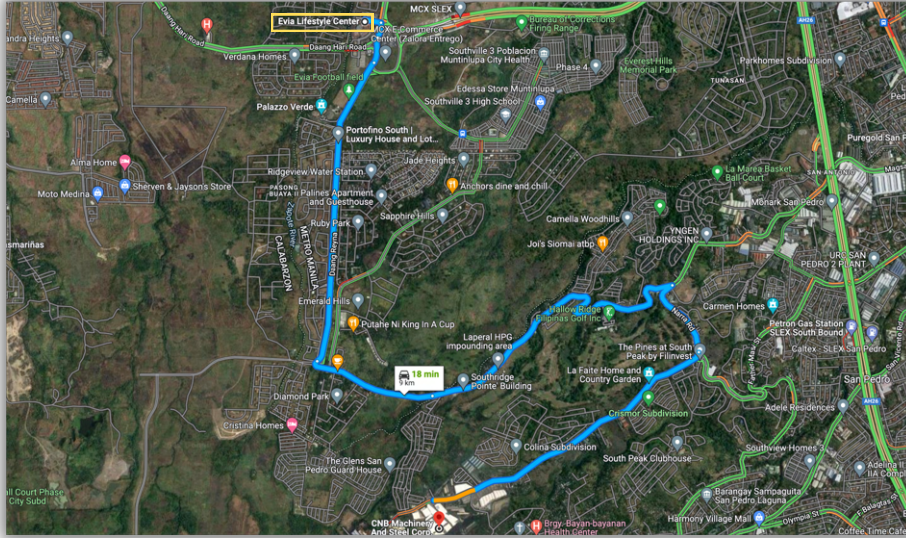
Make sure that you are placing the rebars for cutting at the side of the machine. **DO NOT** place the rebars vertically for cutting as the machine was not designed that way.



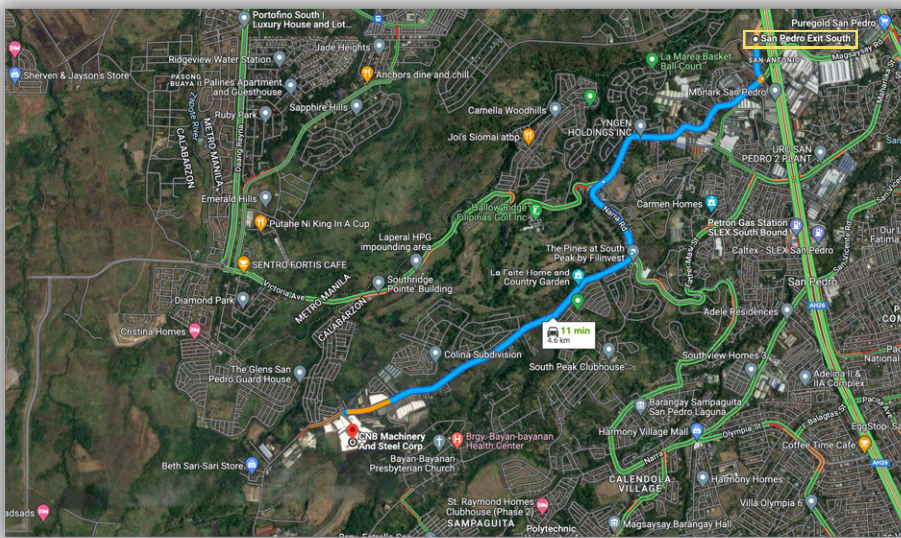
DO NOT leave the rebars mounted on top of the cutter blades when the machine is turned off, because once the machine is turned on again by an unaware operator, the machine will automatically engage in cutting, which will lead to the cutter blades being stuck because of the rebar mounted. This may cause more damage to the machine.

THANK YOU, AND WE LOOK FORWARD TO BE PARTNERS WITH YOU

Route from Evia Lifestyle Center

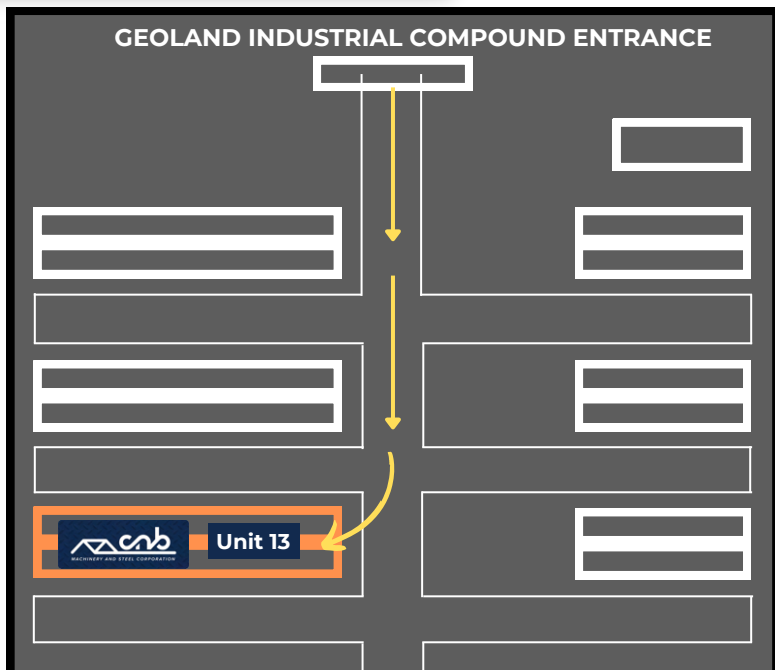


Route from San Pedro Exit South



SKETCH OF COMPOUND

Entrance of the Industrial Compound



CNB MACHINERY AND STEEL CORPORATION

Unit #13 Geoland Industrial Compound 7760
 Narra Road Barangay San Antonio San Pedro Laguna
 TEL: (02) 8824-6386/8824-6389/8824-6346/8824-6391
 FAX: (02) 8857-2346
 E-mail: cnbsales@cnbmachinery.com
 Website: www.cnbmachinery.com

The Home of Rebar Handling Machines

